



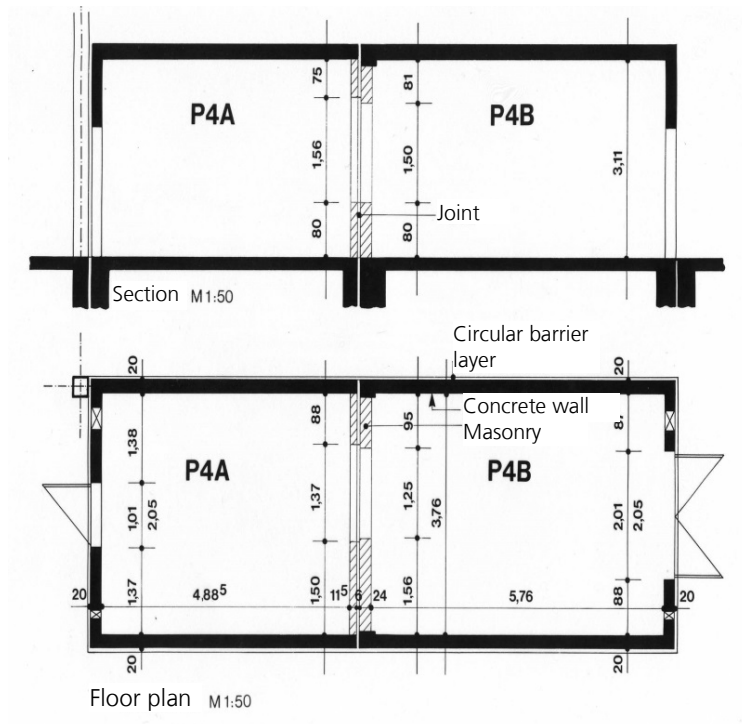
Window Test Laboratory P4

Measurement	Sound insulation, Normalized sound level difference
Standard	DIN EN ISO 10140
Measuring objects	Windows, glazing units, shutters, panels, ventilation elements, joint sealing, small-sized elements (inspection flaps, inspection doors etc.)
Technical data	
Room volume	source room: 67 m ³ , receiving room: 57 m ³
Entrance doors (H x W)	source room: 2,03 m x 1,96 m, receiving room 2,0 m x 0,83 m
Dimensions of test opening (H x W)	1,25 m x 1,50 m or 1,37 m x 1,56 m
Max. size (H x W) of test samples	1,48 m x 1,23 m (Mounting in clear opening) 1,54 m x 1,35 m (Mounting against stop bar)
Max. sound reduction (related to the max. size of test sample)	$R_{\max,w} = 72$ dB

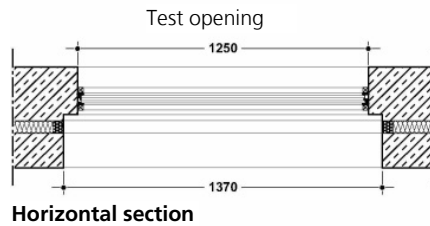
More information

- Installation of elements in the test opening by using butt joint or stop bar.
- Elements with smaller size will be framed by a multi-layer panel construction with high sound insulation.
- Pneumatically movable loudspeaker in the source room and receiving room.
- Test facility is trafficable by forklift.
- Heavy elements can be sited by a crane.
- Compressed air and electric power available.

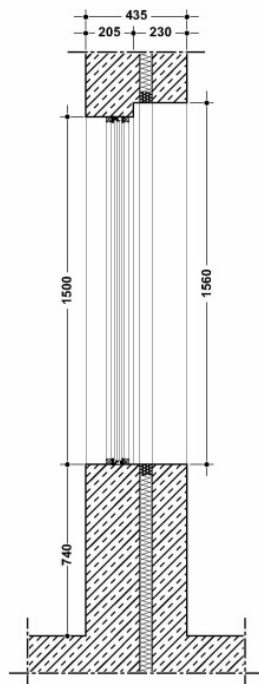
Section and floor plan of the test facility



Horizontal and vertical section of test opening (dimensions in mm)



Horizontal section



Vertical section

The test laboratory of the Fraunhofer IBP has been granted flexible accreditation according to DIN EN ISO/IEC 17025 by Deutsche Akkreditierungsstelle GmbH (DAKKS).